

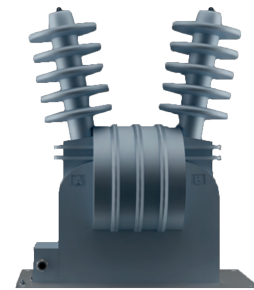
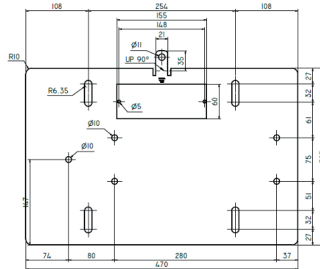


36 kV OUTDOOR MEDIUM-VOLTAGE POTENTIAL TRANSFORMER

At Rymel, we specialize in manufacturing Potential Transformers within a voltage range of 15 kV to 36 kV. This catalog details the technical specifications specifically tailored for our 36 kV series Power Transformers. Our equipment adheres strictly to the IEEE C 57.13 standard, ensuring quality and reliability.

Base Plate:

The transformer comes with a stainless steel base plate designed for easy installation, featuring four pre-drilled holes. Additionally, the base plate is equipped with a 90° ground connection, welded securely in place. Its sturdy construction ensures reliability, with a base plate thickness of 0.2 inches.



Construction:

Rymel manufactures measuring transformers with the highest quality standards and in compliance with the IEEE standard. Our transformers are made with cycloaliphatic epoxy resin, which is resistant to weather and environmental exposure.

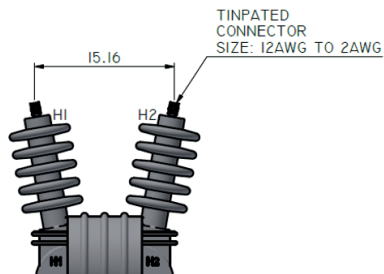
Testing:

The equipments are 100% verified in accordance with the IEEE C57.13 Standard testing.



Primary Terminals:

The primary terminals accommodate conductors from 2 AWG to 12 AWG and are easily replaceable for flexibility and convenience



Installation:

The transformers are meticulously designed for outdoor installation, accommodating both vertical and horizontal arrangements with equal efficacy.

Secondary Terminals:

The secondary terminals feature butterfly terminal type screws, each measuring ¼ inch in size.

Markings:

The equipment comes equipped with an anodized aluminum nameplate affixed to the base plate. Primary and secondary markings, made with a laser marker, are in low relief for clear identification. Additionally, stickers indicating the connections are provided on the terminal cover of the secondary connection.

TYPE		Outdoor
MODEL		TPEM
RESIN		Cycloaliphatic epoxy for exterior use
MAXIMUM INSULATION LEVEL	kV	36.5
APPLIED VOLTAGE	kV	70
MEASUREMENT CLASS		0.3, 0.6, 1.2
NOMINAL BURDEN	VA	W, X, Y
FREQUENCY	Hz	50 -60
INSULATION CLASS		F
BIL, WAVE	kV	200
CREEPAGE DISTANCE	in	44.6"
WINDING MATERIAL		Copper
WEIGHT	Lbs	172
TRANSFORMER RATIOS	V	34500/115V
		27600/115V
		20125/115V
		Other combinations