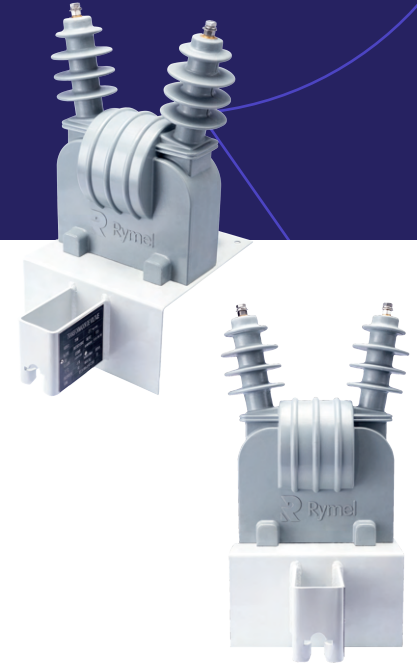




# 17.5 kV CAST RESIN FEEDER TRANSFORMER FOR RECLOSER APPLICATION



Power transformers, constructed from cycloaliphatic epoxy resin, are voltage transformers designed exclusively to supply the energy required for controlling electronic devices such as reclosers.

## ADVANTAGES

- Smaller and lighter in weight, these transformers are made from cycloaliphatic epoxy resin known for its resistance to weathering, corrosion, and environmental exposure.
- They offer easy installation, optimize space, and contribute to a reduced environmental impact.
- Maintenance is minimized.
- Featuring a steel bracket with an integrated pole mount.

INSTALLATION		Outdoor
INSULATING MATERIAL		Cycloaliphatic Epoxy Resin
SYSTEM		Monophase
POLES OR BUSHING		1-2
MAXIMUM VOLTAGE	kV	17.5
RATED PRIMARY VOLTAGE	kV	From 7.62 To 13.2
RATED SECONDARY VOLTAGE	V	115-120
THERMAL POWER	kV	0.5 kV
INSULATION CLASS		F ( 155°C)
INSULATION LEVEL	kV	17.5/38/95
BIL, WAVE 1.2/50 $\mu$ S primary	kV	95
FREQUENCY	Hz	50-60
SPANNING MATERIAL		Copper
OUTLET DISTANCE	mm	585
BUSHING SPACING ( F-F)	mm	250
SUPPORT		Including steel bracket for easy installation
MARKINGS		Low relief markings
MANUFACTURING AND TESTING STANDARDS		IEEE Std C57.6 2016.

